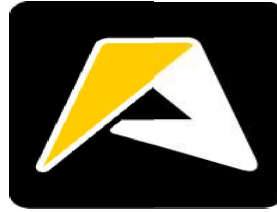


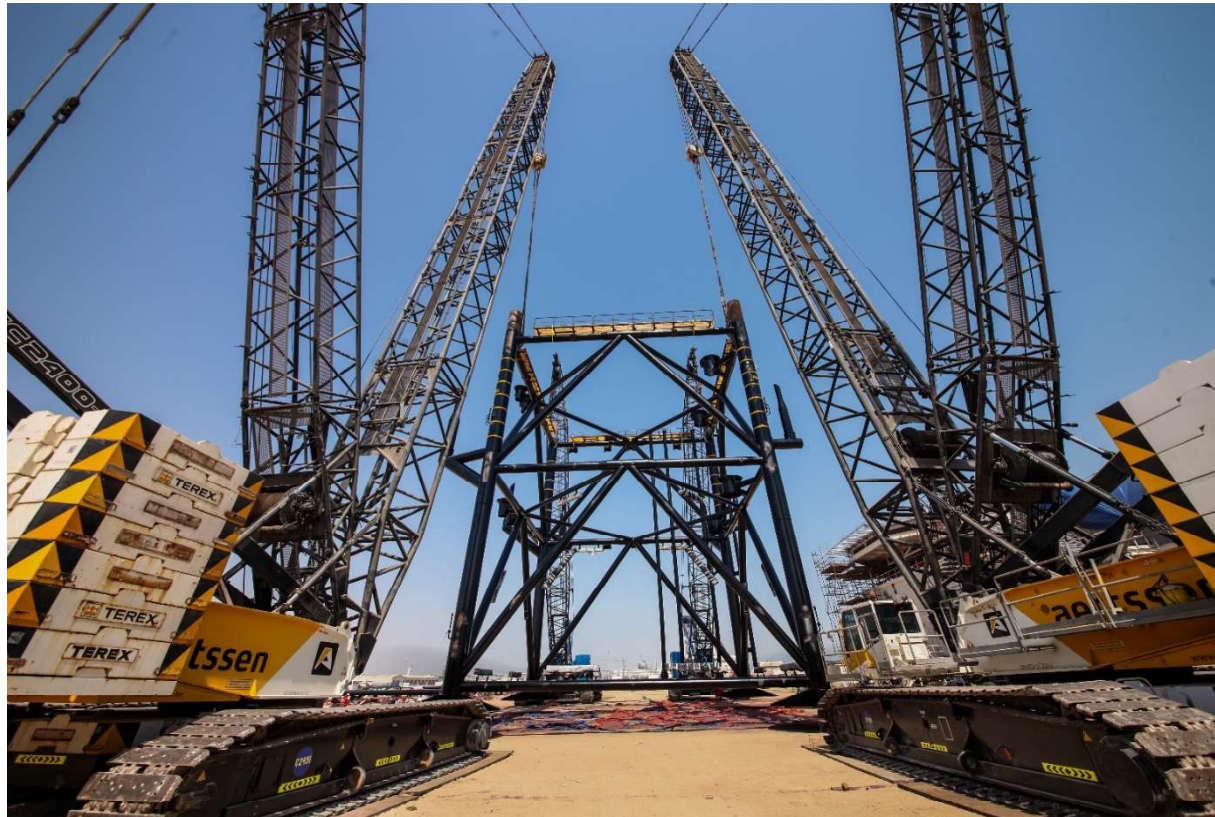
aertssen



Project References GCC

2014 – 2015 – 2016 – 2017 - 2018

Construction – Oil & Gas



Zirku : Development of facilities on artificial Island

- Scope:
Building accommodation for 2,150 people on islands being constructed in the Zakum Development Company's (ZADCO) Upper Zakum offshore oil field development, 84 km off the coast of Abu Dhabi.
- Client: HLG
- Location: Zakum – Abu Dhabi, UAE
- Main equipment:
 - o 40t Crawler Crane
 - o 60T Rough Terrain
 - o 4 units 150T Crawler Crane
 - o 2 units 160T Mobile Crane
 - o 220T Mobile Crane
 - o 280T Crawler Crane
- Execution: 2014
- Project value: \$ 4,250,000
- Special remarks:
 - o AMS provided Jetty Services
 - o Transportation with AMS Lowbeds
 - o Equipment rented from 6 Months to 12 months



SARB : start-up of two new artificial islands

- Scope:
Preparation and startup Island Satah Al Razboot : The offshore facilities will include two riser platforms, four flare platforms, four interconnecting bridges, and a single point mooring (SPM) buoy located to the north of the onshore facility.
AMS assisted in building the Quay Wall.
Vibro compaction.
- Client: Al Hassan; NSCC; Hyundai Heavy Industries; Speedy International
- Location: SARB Island, UAE
- Main equipment:
 - o Jetty use for heavy lift Services
 - o Hire of multiple mobile & crawler cranes and multiple lowbed trailers
- Execution: 2012 – 2015
- Project value: \$ 750,000



DAS Island: Integrated Gas development expansion project

- Scope:
Numerous offshore lifting projects supporting construction of new facilities on Das island, to increase offshore processing facilities, including land reclamation.
AMS has been chosen to be the preferred partner to assist the lifting activities during the expansion of the refinery.
- Client: CCTC; Archirodon
- Location: Das Island, UAE
- Main equipment:
CCTC:
 - o 1 unit Tadano GR600 EX (60T mobile RT)
 - o 1 unit Tadano Faun ATF 110G-5 (110T mobile crane)
 - o 1 unit Tadano GR1450EX (145T mobile RT)Archirodon:
 - o 1 unit Tadano GR800EX (80T mobile RT)
 - o 1 unit Hitachi SCX2800 (280T crawler crane)
- Execution: 2015 – 2017
- Total Project value: \$500,000,000
- Special remarks:
 - o AMS provided lifting plans, ground bearing studies, method statement and risk assessment



Not allowed to
take pictures



Placement of Steel Jackets on Barge

- Scope:
Placement of (in total) two steel jackets on a barge.
Jackets were ment to be used on oil rigs.
- Client: Denholm Yam; ALE
- Location: ICAD; Adyard – Abu Dhabi, UAE
- Main equipment:
 - o 2 units of Hitachi SCX2800 (280T crawler crane)
 - o 2 units of Terex CC2400 (400T crawler crane)
- Execution: 2013 and 2014
- Total Project value: \$ 1,000,000
- Special remarks:
 - o Weight each jacket: 280 Ton
 - o 3D drawings
 - o Cranes working in tandem & counterweights aligned at all times
 - o One jacket to be changed from horizontal to vertical position



GASCO IGD-Expansion Package 3: Onshore pipeline and Modifications

- Scope:
Lump sum package: Lifting of 31 heavy items;
feed gas separators, vessels, columns, boilers, stacks, ...
Engineering studies & assistance on site.
- Client: CAE for Tecnicas Reunidas; CCC
- Location: Habshan 5, UAE
- Main equipment:
 - o 2 units of Terex CC2800-1 (600T crawler crane)
 - o 1 unit of Hitachi SCX2800 (280T crawler crane) – assist crane
 - o 1 unit of Liebherr LTM 1220-5.2 (220T mobile crane) – assist crane
 - o Multiple mobile cranes
- Execution: 2016 – 2018
- Total Project value: \$ 700,000,000
- Special remarks:
 - o Weight of heaviest item: 656 Ton
 - o Column required tandem lift by our CC2800-1 cranes



GASCO: Shutdown Train 1 & 2 Process Furnace Upgrade

- Scope:
Lump sum package: Completion of Heavy Lifting Works at GASCO Ruwais for shutdown Train 1&2. Removal and installation of furnace stacks and convection banks.
- Client: Kharafi National
- Location: Ruwais, UAE
- Main equipment:
 - o 1 unit of Terex CC2800-1 (600T crawler crane)
 - o 1 unit of Hitachi SCX1500 (150T crawler crane) – assist crane
 - o 1 unit of Liebherr LTM 1220-5.2 (220T mobile crane) – assist crane
- Execution: 2017
- Project value: \$ 2,000,000

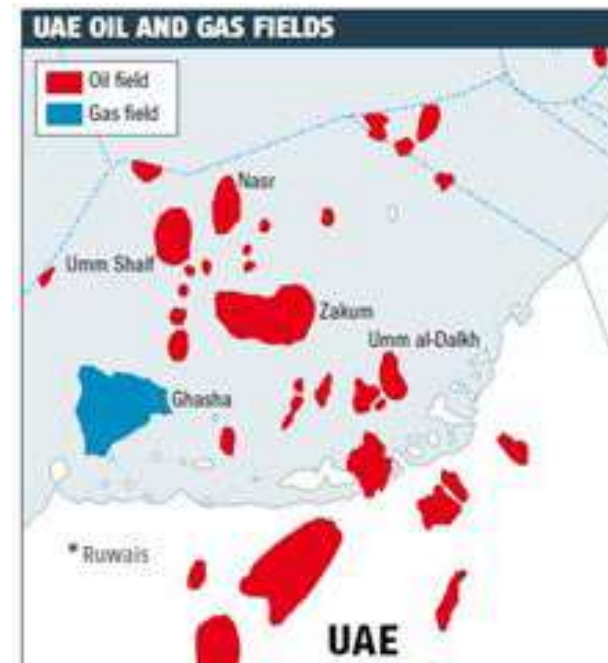


Not allowed to
take pictures



Zakum Offshore Project

- Scope:
Development of the facilities on the four artificial islands including wellhead control, manifolds, crude oil process facilities, water injection and gas lift, booster gas compression facilities, oil export pumps, power generation and ancillary utilities, and modification of the existing facilities. Up to 22 production modules comprising of a wellhead control and oil processing unit will be constructed.
AMS assists on the start-up of the islands.
- Client: Petrofac
- Location: Zakum Island, UAE
- Main equipment:
 - o 1 unit Hitachi SCX700 (70T crawler crane)
 - o 2 units Hitachi SCX1500 (150T crawler crane)
- Execution: 2014 – 2018
- Project value: \$3,790,000



Borouge 3: Refinery Expansion

- Scope:
 - Assembly & installation of Silo's.
 - Heavy Lift Services for the installation of water intake pipes; manipulation of storage tanks at lump sum price.
- Client: Kentech International; Descon; Tecnimont; Ellimental
- Location: Borouge 3 – Ruwais, UAE
- Main equipment:
 - o Multiple mobile and crawler cranes from 50Ton up to 400Ton
- Execution: 2014
- Project value: \$850,000



Not allowed to
take pictures



Ruwais Refinery Expansion - TAKREER

- Scope:
 - Expansion refinery to increase crude oil processing capacity.
 - Rental of cranes for construction jetty; construction works; erection of storage tanks, boilers & pressure tanks.
 - Installed 12 major components weighing up to 213ton. The largest item was 62m high.
- Client: Dodsal Engineering; CB&I; Daewoo; Sungdo; Dredging International; GS Engineering; ...
- Location: Ruwais, UAE
- Main equipment:
 - o Constantly working with multiple cranes for different clients
- Execution: 2011 – 2018
- Total Project value: \$8,650,000
- Special remarks:
 - o AMS provided lifting plans, ground bearing studies, method statement & risk assessment



Cranes in lay down area ready for service and repairs



Rumaitha: Expansion of crude oil processing facility

- Scope:
Engineering study supported by detailed lifting plans and determining method of execution.
AMS lifts elements such as boilers, pressure tanks weighing up to 213tons and 62m high.
- Client: Al Hassan; GS Engineering; Xervon
- Location: Rumaitha – Shamayel, UAE
- Main equipment:
 - o 1 unit Tadano GR300 EX (30T mobile RT)
 - o 1 unit Tadano GR600EX (60T mobile RT)
 - o 2 units Hitachi SCX1500 (150T crawler crane)
- Execution: 2015 – 2017
- Total Project value: \$1,000,000,000



Not allowed to
take pictures



Barakah Nuclear Plant: Reactor 4

- Scope:
Executing heavy lifts in the plant area and provision of lifting plans to the client.
Building breakwater.
- Client: Hyundai Engineering – Samsung JV; Anthena
- Location: Barakah, UAE
- Main equipment:
 - o 1 unit Hitachi SCX1500 (150T crawler crane)
 - o 1 unit Hitachi SCX2800 with luffer (280T crawler crane)
 - o 1 unit Terex CC2400-1 (400T crawler crane)
- Execution: 2017
- Total Project value: \$2,000,000,000



Not allowed to
take pictures



Heavy lifting activities in plant area of EGA Taweelah

- Scope:
Rental of our crane for lifting operation purposes.
- Client: ALE Middle East
- Location: Taweelah, UAE
- Main equipment:
 - o 1 unit Terex CC2400-1 (400T crawler crane)
- Execution: 2017
- Project value: \$450,000



Not allowed to
take pictures



Liwa Plastics Project – Steam Cracker, EPC1

- Scope:
 - o Lifting many heavy items such as a convection module.
- Client: TCC
- Location: Liwa Plastics Sohar, Oman
- Main equipment:
 - o 1 unit Terex CC2400-1 (400T crawler crane)
 - o 1 unit Hitachi SXC2800-2 (280T crawler crane)
- Execution: 2017 – 2018
- Total Project value: \$2,800,000
- Special Remarks:
 - o 400T Crane Configuration: SWSL (super lift and luffer)
 - o 54 meter main boom – 24 meter luffer



PDO – Harweel

- Scope:
Assisting client with the lifting of heavy items.
- Client: ALE Heavy Lift
- Location: Salalah, Oman
- Main equipment:
 - o 1 unit Terex CC2400-1 (400T crawler crane)
 - o 1 unit Terex CC2800-1 (600T crawler crane)
- Execution: 2017
- Total Project value: -



Construction – Marine Works



Water chambers - Extension of Container Terminal 2 at Jebel Ali Port

- Scope:
 - Construction of 400m long quay wall along with associated dredging and marine accessories.
 - Installation of crane rails together with foundation works.
- Client: Archirodon
- Location: Jebel Ali Port – Dubai, UAE
- Main equipment:
 - o 1 unit Hitachi SCX2800-2 (280T crawler crane)
- Execution: 2015
- Project value: \$250,000



Khalifa Port Expansion

- Scope:
Lifting and transportation of 6.135 blocks to build quay wall.
- Client: National Marine Dredging Company
- Location: Khalifa Port – Abu Dhabi, UAE
- Main equipment:
 - o 1 unit SCX1000 (100T crawler crane)
 - o 3 units SCX2800-2 (280T crawler crane)
 - o 1 unit Terex CC2400-1 (400T crawler crane)
 - o 2 lowbed Trailers
- Execution: 2017 – 2018
- Total Project value: -
- Special remarks:
 - o Equipment working double shifts, 7 days a week
 - o Barge operations



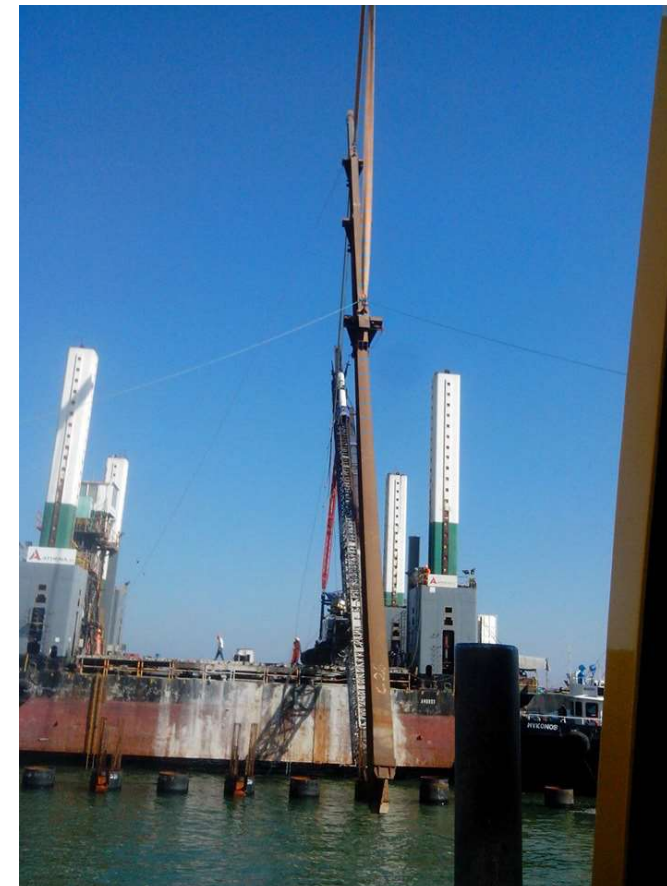
Al Maryah Island Bridges

- Scope:
Placement and installation of bridge parts.
- Client: Sixco
- Location: Al Maryah Island – Abu Dhabi, UAE
- Main equipment:
 - o 1 unit Hitachi SCX2800-2 (280T crawler crane)
- Execution: 2015
- Total Project Value: -



Fujairah Quay wall expansion

- Scope:
Piling for Quay Wall.
- Client: Athena
- Location: Fujairah Port, UAE
- Main equipment:
 - o 2 units Terex CC2400-1 (400T crawler crane)
- Execution: 2013
- Total Project value: -
- Special remarks:
 - o Super lift weight: 120T

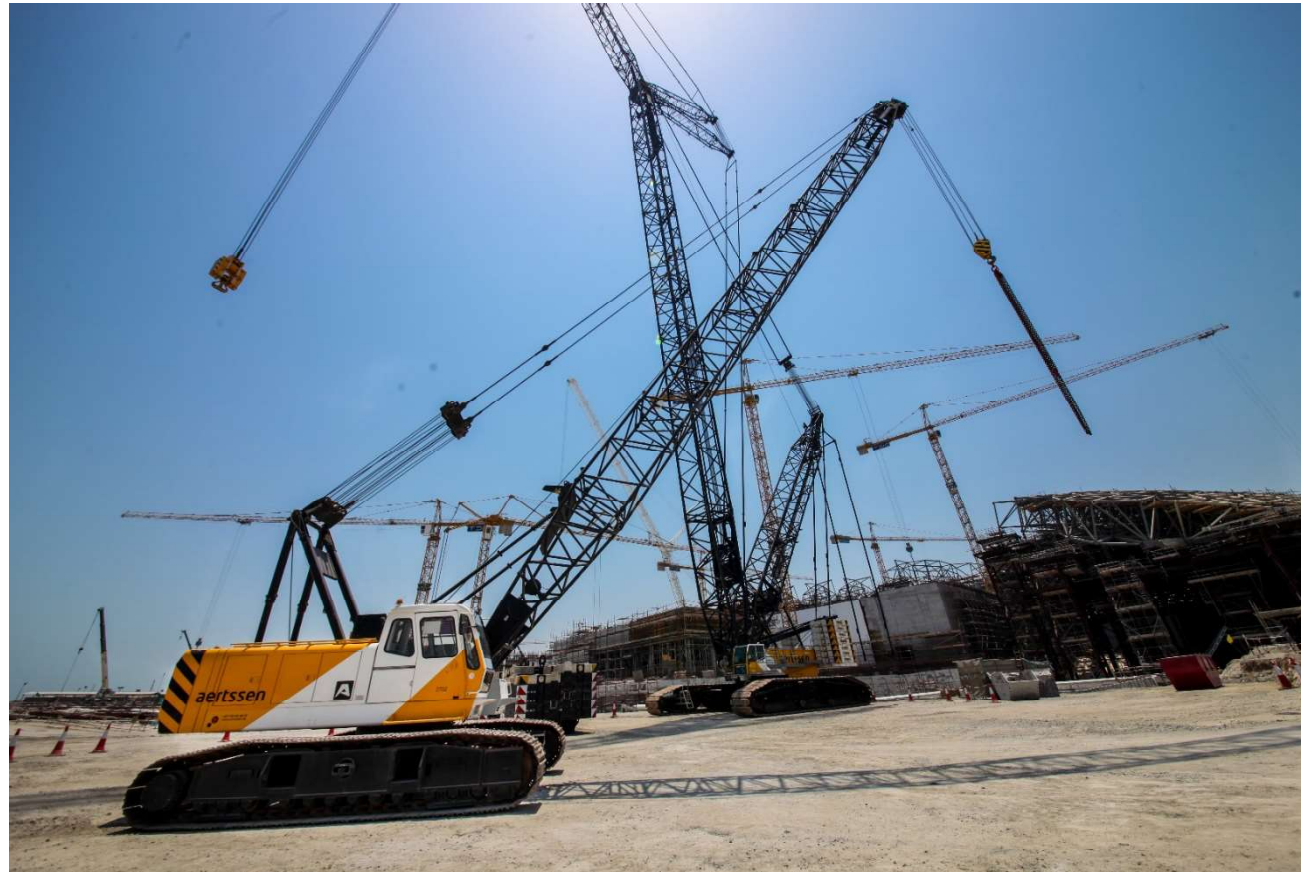


Al Zour Refinery – Package 5 (Marine Works)

- Scope:
Construction of tank farm and jetty for import of Gas (LNGi).
- Client: HDKC
- Location: Al Zour, Kuwait
- Main equipment:
 - o 1 unit Hitachi SCX700 (70T crawler crane)
 - o 1 unit Hitachi SCX1000 (100T crawler crane)
 - o 3 units Hitachi SCX1500 (150T crawler crane)
 - o 2 units Hitachi SCX2800-2 (280T crawler crane)
 - o 1 unit Terex CC2400-1 (400T crawler crane)
- Execution: 2017-2018
- Total Project value: \$1,500,000,000
- Special remarks:
 - o 4 cranes are placed on a barge
 - o Long term project with hire rentals of one year



Construction – Civil Works



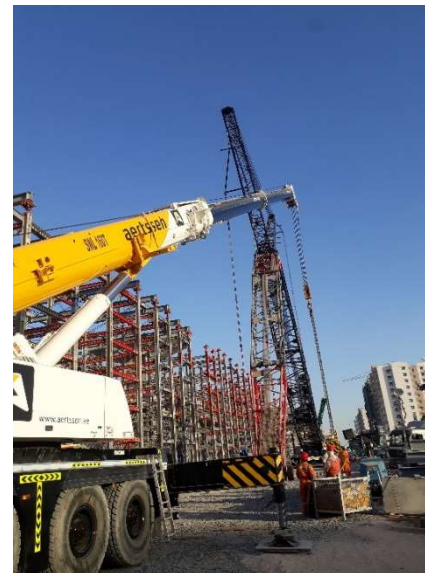
Louvre Museum

- Scope:
Placing dome element.
Removal of Tower Crane.
- Client: Waagner Biro
- Location: Saadiyat Island – Abu Dhabi, UAE
- Main equipment:
 - o 1 unit Terex CC2800-1 (600T crawler crane)
 - o 1 unit Hitachi SCX2800 (280T crawler crane)
- Execution: 2015
- Project Value: \$850,000
- Special remarks:
 - o AMS drafted extensive plans & composed 3D engineering simulation
 - o Weight of dome element: 15T at 132m radius



Dubai EXPO 2020

- Scope:
Multiple projects dedicated to the World Expo in 2020.
-> Placing of bridge parts for the new metroline.
- Client: Rizzani De Eccher
- Location : Dubai, UAE
- Main equipment:
 - o 1 unit Terex CC2400-1 (400T crawler crane)
 - o 1 unit Liebherr LTM1160 (160T mobile crane) assist crane
- Execution: 2017 – 2018
- Total Project Value: -
- Special remarks:
 - o Heaviest load 125T



Abu Dhabi International Airport: Midfield Terminal

- Scope:
Installation of steel structure for the main roof and arch.
Removal of Tower Crane.
- Client: CSEC; TCA
- Location: Abu Dhabi Airport, UAE
- Main equipment:
 - o 2x 1 unit Terex CC2800-1 (600T crawler crane)
- Execution: 2015 – 2018
- Total Project Value: \$2,970,000,000
- Special remarks:
 - o Crane configuration for removal Tower Crane:
72 meter main boom & 96 meter luffer



Burj Vista Tower Removal

- Scope:
Removal of a Tower Crane.
- Client: CCC
- Location: Burj Vista – Dubai, UAE
- Main equipment:
 - o 1 unit Terex CC2800-1 (600T crawler crane)
 - o 1 unit Liebherr LTM1160 (160T mobile crane) assist crane
- Execution: 2018
- Total Project Value: -
- Special remarks:
 - o Very narrow spot to assemble/
dismantle the crane



Dubai Eye

- Scope:
Assisting Client with its lifting operations.
- Client: Fagioli
- Location: Dubai, UAE
- Main equipment:
 - o 1 unit Tadano GR500EX (50T mobile crane)
- Execution: 2016 – 2017
- Total Project Value: -
- Special remarks:
 - o Crane placed on a barge



Muscat Airport Expansion

- Scope:
Construction of 2 Steel Maintenance Hangars.
- Client: Tigersteel
- Location: Muscat, Oman
- Main equipment:
 - o 2 units Hitachi SCX1500-3 (150T crawler crane)
 - o 2 units Terex CC2400-1 (400T crawler crane)
- Execution: 2016
- Total Project Value: -
- Special remarks:
 - o JV Mobilift-Aertssen completed at least 10 tandem lifts of which 8 box trusses of 168ton and 2 door trusses of 386 tons needed to be put in place



aertssen



United Arab Emirates

☎: +971 2 555 4959

📠: +971 2 555 4965

📧: info.ae@aertssen.be

Qatar

☎: +974 4409 5406

📠: +974 4409 9877

📧: info.qa@aertssen.be

Oman

JV Aertssen – Mobilift & Partners

☎: +968 9727 3232

📧: info.ae@aertssen.be

Kuwait

JV Aertssen – AGAM

☎: +965 5150 4411

📧: info.ae@aertssen.be